

MODELS 722 & 726

LIGHT DUTY 2 1/2" PITCH CHIP CONVEYOR

(Model 726 is a liquid tight Model 722)

This unit has a shallow frame of 6 5/8" which allows it to fit into tighter spaces other 2 1/2" pitch units can't. Its smaller overall construction and the corresponding tighter tolerances makes this the ideal choice when conveying small and more finite scrap.

1700 Division Street, New London, WI 54961
Phone: (920) 982-4030; Fax: (920) 982-6800
Website: www.nleco.com

Widths: 6", 8", 12", 18", 24", 30" and 36"
(Custom Widths Available)

Lengths: Depends on Application

Standard Speed: 30 FPM

Standard Motor: 1/2 HP 230/460/3/60 TEFC

Standard Drive: Top Mount, Right Side

Frame: 6 5/8" Deep x Formed 12 Gauge

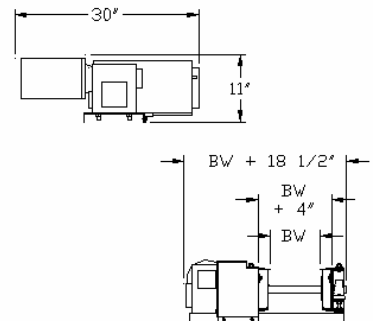
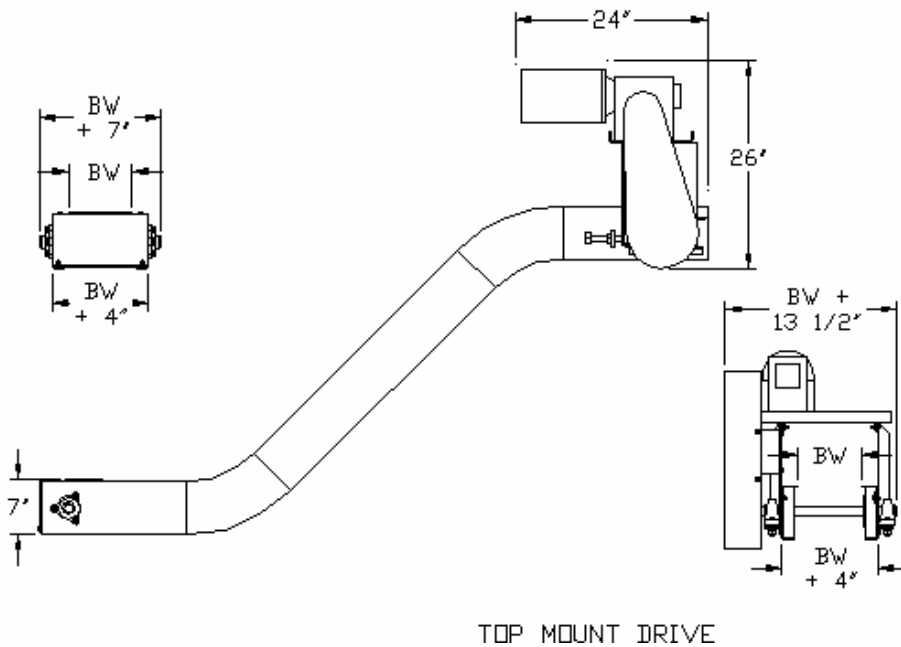
UpTime Express – 3-5 day shipments widths are highlighted in blue

Bearings: Grease Sealed

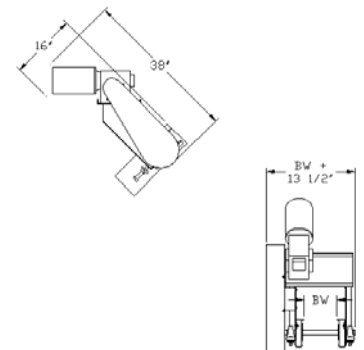
Sprockets: 5 Tooth x4.25" Pitch Diameter

Belt: 2 1/2" Pitch Hinged Steel Belt, One Piece Apron, with 7/8" high cleats on 12 1/2" Centers, 1" high side wings, 1.5" Diameter Rollers (Flanged Rollers are available), Outside Sidebars are required on belts greater than 18", but also optional for smaller widths.

BELT WIDTH:	6"	8"	12"	18"	24"	30"	36"
FRAME WIDTH:	10"	12"	16"	22"	28"	34"	40"



SIDE MOUNT DRIVE



45° TOP MOUNT DRIVE